

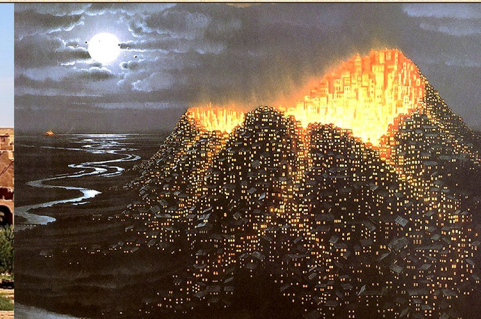
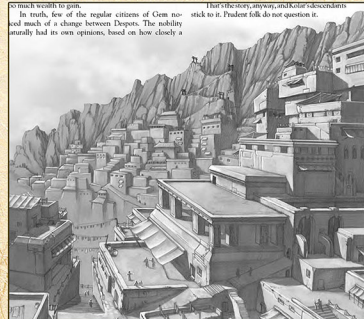
The CITY OF GEM began when the prospector, Rankar, discovered gems in a deposit. Through his ingenuity and cutthroat business practices, Gem became the most affluent city in the region with a monopoly on the gem trade.

The Uncrucified

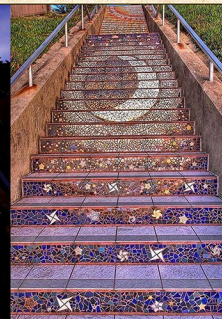
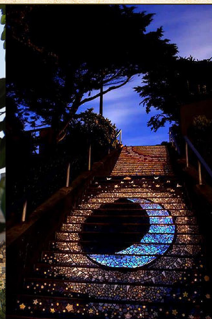
THE CITY OF GEM

Gem stands in the shadow of a hollow caldera at the edge of the FIRE MOUNTAINS, most of the city existing below the surface in large lava tubes. The most prominent landmark is the DESPOT's palace viewable from above and below the surface.

THE LANDSCAPE OF GEM



THE DESPOT'S PALACE



THE RED STONE DISTRICT



THE SUNKEN BAZAAR



THE SUN MARKET



THE MERCENARY MARKET



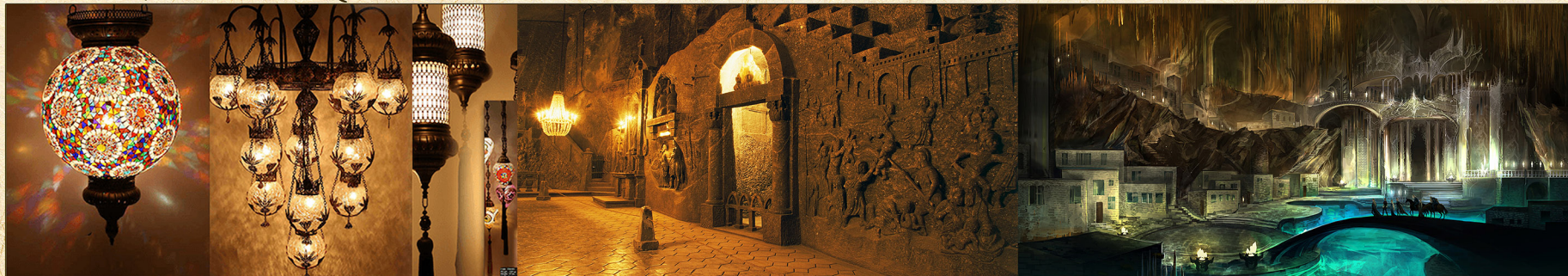
The residents of Gem live mostly beneath the surface in large lava tubes with apartments or above surface in shaded areas. The affluent can afford nice dwellings above and below ground, while the poor cram themselves in smaller lava tubes or makeshift shacks.

The Uncrucified

THE CITY OF GEM

The original Despot kept a monopoly on the gem trade by allying himself with complementary businesses which he elevated to the noble houses of Gem. They are HOUSE ARBANI, HOUSE SAHLAK, HOUSE IBLAN, HOUSE CIRCLA, and HOUSE TRASTI.

UPPER CLASS / SUBTERANNEAN QUARTERS



LOWER CLASS / LAVA TUBES AND SURFACE SLUMS



HOUSE ARBANI



HOUSE SAHLAK



HOUSE IBLAN



HOUSE CIRCLA



HOUSE TRASTI

